



LG
OPTIMUS F3

QUICK START GUIDE

Hello

Thanks for purchasing a TextNow powered phone. We're proud to be able to provide you a cutting-edge smartphone with our reasonably priced monthly plan. We hope you love using it!

This guide is intended to teach you about setting up your TextNow powered phone and using its unique features.

If you require assistance, please feel free to call our toll-free number at:

1 (888) 250-5255

or submit a request at
<http://textnow.com/support>.

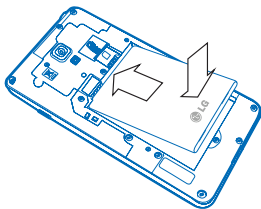
Set Up Your Phone

Install the battery

- 1 Gently lift the cover. There is a small indent at the top of the phone to make the removal of the cover easier.



- 2 Insert the battery, making sure to align the gold contacts on the battery with the gold contacts in the phone.



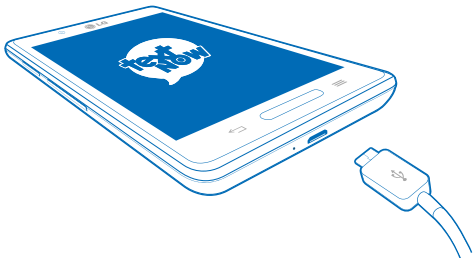
- 3 Replace the cover, making sure all the tabs are secure and there are no gaps. Press around the outside edges to help firmly secure the back cover in place.

Charge the battery

After you install the battery, charge it before using your phone.

Note: Your phone's battery should have enough charge for the phone to turn on and find a signal, run the setup application, log into TextNow, and make a call. You should fully charge the battery as soon as possible.

- 1** Plug the USB cable into the charger/accessory jack on the bottom of the phone.
- 2** Plug the USB cable into the charging head, and then plug the charging head into an electrical outlet.



Turning on Your Phone

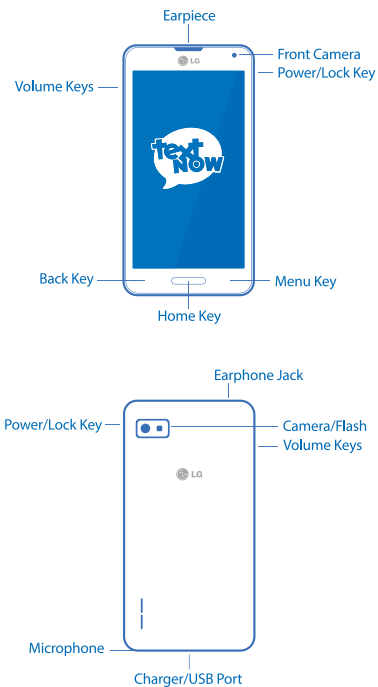
Use the Power/Lock Key to turn your phone on, to lock the screen or display the lock screen, and to access the Device options menu.

- Press and hold the Power/Lock Key to turn the phone on.
- Press the Power/Lock Key momentarily when the phone is on to lock the screen.
- Press and hold the Power/Lock key when the phone is on to fully power off the device, restart the device, or turn on Airplane mode.



— Power/Lock Key

Your Phone at a Glance



Setup Wizard

Once your phone is powered on, you may see the Welcome Screen to the setup wizard. If you do not see the Welcome Screen, you can skip this step.

- 1 Choose a language, and then tap ► to begin setup.
- 2 Select Wi-Fi network to join or press **Skip** to join later
- 3 Follow the onscreen instructions to complete each section. For each topic, you will have an option to skip it and continue to the next screen.

Got Google? Follow the prompts to sign in to your current Google Account, or sign up for a new Google Account right from your phone. Signing into a Google account will let you download apps and access other Google services such as Gmail on your device.

- Tap **Yes** to enter your Gmail address and password and then tap the right arrow to sign in to your current Google Account.
- Tap **No** to sign up for a new Google account. Tap Get an account, and then follow prompts to set up your new account.

- 4 **Backup and Restore.** Follow the onscreen instructions to complete each section. For each topic, you will have an option to skip it and continue to the next screen.
- 5 **Google & location.** Select options for allowing Google and other apps to use your location information.
- 6 **This phone belongs to.** Enter your name. Your phone uses your name to personalize some features.
- 7 **Google services.** Learn about Google's privacy policy and other terms.
- 8 At the **Setup complete** screen, tap **Finish** to complete setup and continue with other options.
- 9 At the **Dropbox** screen, select an option and follow the onscreen instructions.
 - **Create a new Dropbox account** Tap to set up a Dropbox account to save your photos and videos to a Web-based storage area.
 - **I already have an account** Tap to sign in to your current Dropbox account.
 - **No thanks** Tap to skip the Dropbox setup screens.

Connect to Wi-Fi

For the best possible experience and to minimize your data usage, connect to Wi-Fi as much as possible.

Benefits of connecting to Wi-Fi

- Faster internet speeds
- Unlimited high speed data transfer
- Reduce data usage on your plan
- Better call quality
- Better reception for texting and calling inside buildings
- Phone service without roaming fees even when overseas

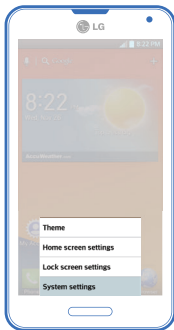


Turn on Wi-Fi



Press  and tap  > **Settings** > **Connections** > **Wi-Fi**. The On/Off slider displays **ON** when Wi-Fi is active.

Tip: You can also turn Wi-Fi on and off through the Notifications panel. Drag your finger down from the very top of the screen to display the Notifications panel down and tap Wi-Fi to enable or disable Wi-Fi.

Note: Some Wi-Fi networks are self-discoverable, which means no additional steps are required for your phone to connect to a Wi-Fi network. It may be necessary to provide a user name and password for certain closed wireless networks.







Connect to a Wi-Fi Network

- 1 Press  and tap  > **Settings** > **Connections** > **Wi-Fi**.
- 2 The network names and security settings of detected Wi-Fi networks are displayed.
 - When you select an open network, you will be automatically connected to the network.
 - When you select a secured network, you will need to enter the wireless password to connect to the network. Enter the password and tap **Connect**. You can use the **show password** option to display the password as you enter it.



Login to TextNow




- 1 Press  and tap .
- 2 If you signed in using Facebook when you purchased your phone, press .
- 3 If you signed in using an username and password when you purchased your phone, press 
 - Sign in using the same username and password you used to purchase the phone (Your username may be pre-filled for you)
 - **Important:** Please note signing in using a different TextNow from what was used to purchase the device will result in calling functionality not working
 - Should you require assistance signing into your TextNow account or require the use of the device with a different TextNow account from the one used to make the purchase, please contact customer care at

1-888-250-5255 or <http://textnow.com/support>

Setup Visual Voicemail

All TextNow Wireless plans come with free Visual Voicemail.

Visual voicemail notifies you when you get a new voicemail message and shows up in your TextNow inbox. To play the voicemail, tap the voicemail in your TextNow inbox. Visual Voicemail removes the hassle of calling a number to check your voicemail while going through a series of complicated menus.

- 1 Tap  located top left 
- 2 Tap  located top left
- 3 Tap **Settings > Voicemail**
- 4 To use the default voicemail greeting, tap Greeting and select "Default Greeting".
- 5 To record your own custom greeting, tap Custom Greeting.
 - By tapping Custom Greeting you will be asked to record your greeting from your phone.
 - You will also be able to play back the greeting you recorded and rerecord the greeting.

Download Games and Apps

All TextNow powered phones are full-featured smartphones. This means you can download and run all of your favorite apps from the Google Play Store.

To do so, tap **Play Store**.

You may be asked to create or sign into a Google Account.

Once you are signed into a Google Account, you can either search for a specific app that you are looking for or browse the many apps that are available in the Google Play Store.

